



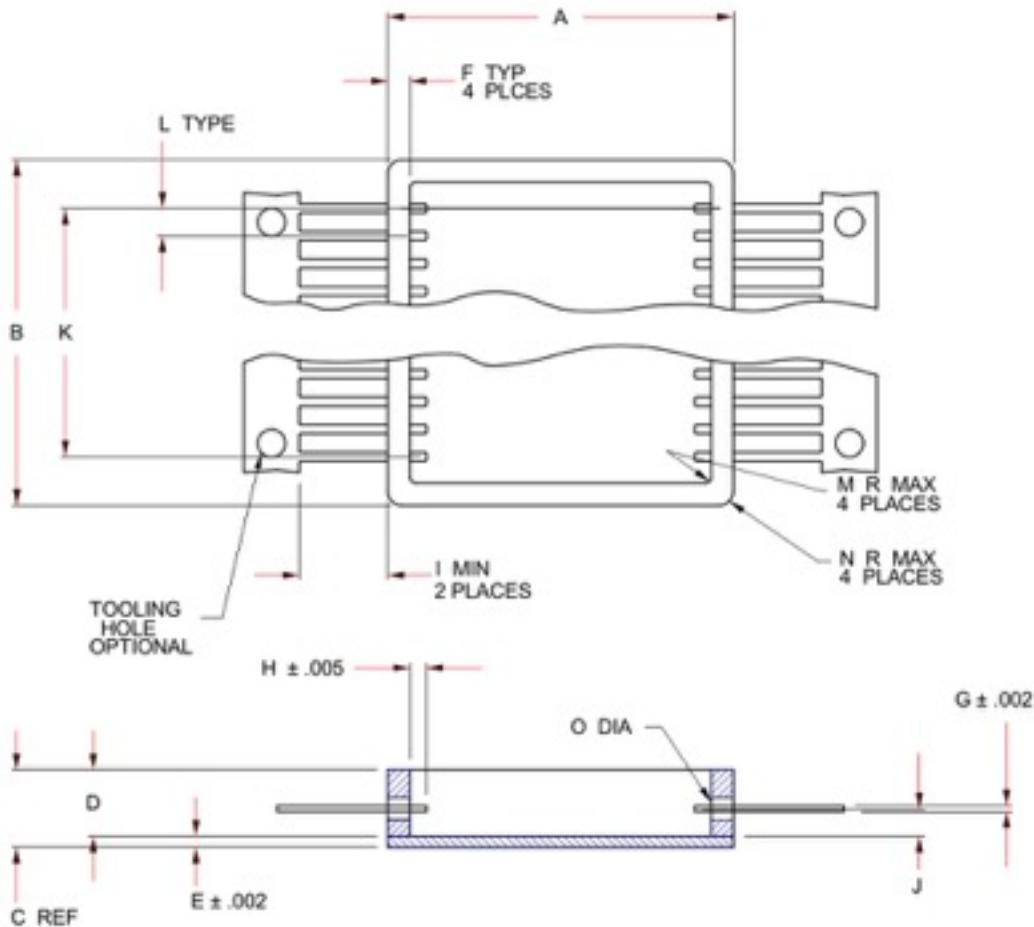
Advanced Technology Group, Inc.

It's Easy When You Know How

Technical Manual:

Two Piece Construction Flatpack (ATGTPFP)





ATGTPFP

TWO PIECE CONSTRUCTION FLATPACK

Material: pins and frame ASTM F-15 Kovar alloy per Mil-I-23011. Class 1.

Glass: Corning 7052 or equivalent.

I. Finish - frame and pins: electroless nickel per Mil-C-26074B. 100 microinches minimum. 350 microinches maximum.

A. Pins: gold plate per Mil-G-45204. Type III. Grade A. 50 microinches minimum.

B. Frame and Pins: gold plate per Mil-G-45204. Type III. Grade A. 50 microinches minimum.

II. Finish - frame and pins: electrolytic nickel per QQ-N-290. 100 microinches minimum. 350 microinches maximum.

A. Pins: gold plate per Mil-G-45204. Type III. Grade A. 50 microinches minimum.

B. Frame and Pins: gold plate per Mil-G-45204. Type III. Grade A. 50 microinches minimum.



ATGTPFP - Two Piece Construction Flatpack

	A	B	C	D	E	F	G	H	I	J	K	L	M Max.	N Max.	O	Pin Total
-001	0.375	0.375	0.115	0.105	0.010	0.020	0.010W x 0.015TH	0.030	0.500	0.040	0.200	0.050	0.025	0.025	0.040	10
-002	0.380	0.380	0.110	0.100	0.010	0.020	0.010W x 0.015TH	0.030	0.500	0.030	0.300	0.050	0.025	0.025	0.033	14
-003	0.410	0.275	0.125	0.115	0.010	0.025	0.010W x 0.015TH	0.030	0.500	0.040	0.300	0.050	0.025	0.025	0.034	14
-004	0.500	0.375	0.105	0.095	0.010	0.030	0.010W x 0.015TH	0.030	0.500	0.045	0.350	0.050	0.025	0.025	0.040	16
-005	0.500	0.500	0.125	0.115	0.010	0.030	0.010W x 0.015TH	0.030	0.500	0.045	0.350	0.050	0.025	0.025	0.040	16
-006	0.510	0.385	0.130	0.115	0.015	0.040	0.010W x 0.015TH	0.030	0.500	0.045	0.350	0.050	0.025	0.025	0.040	16
-007	0.625	0.375	0.125	0.115	0.010	0.040	0.010W x 0.015TH	0.030	0.500	0.050	0.500	0.050	0.025	0.025	0.040	22
-008	0.625	0.375	0.125	0.115	0.010	0.040	0.010W x 0.015TH	0.030	0.500	0.040	0.400	0.050	0.025	0.025	0.040	18
-009	0.625	0.625	0.130	0.115	0.015	0.040	0.010W x 0.015TH	0.030	0.500	0.041	0.500	0.050	0.025	0.025	0.040	22
-010	0.625	0.625	0.130	0.115	0.015	0.040	0.010W x 0.015TH	0.030	0.500	0.041	0.450	0.050	0.025	0.025	0.040	20



ATGTPFP - Two Piece Construction Flatpack

	A	B	C	D	E	F	G	H	I	J	K	L	M Max.	N Max.	O	Pin Total
-011	0.695	0.695	0.145	0.135	0.010	0.040	0.010W x 0.015TH	0.030	0.500	0.050	0.500	0.050	0.025	0.025	0.040	22
-012	0.750	0.250	0.125	0.115	0.010	0.040	0.010W x 0.015TH	0.030	0.500	0.040	0.500	0.050	0.025	0.025	0.040	24
-013	0.795	0.635	0.140	0.125	0.015	0.040	0.010W x 0.015TH	0.030	0.500	0.052	0.400	0.050	0.025	0.025	0.040	18
-014	0.805	0.805	0.135	0.125	0.010	0.040	0.010W x 0.015TH	0.030	0.500	0.050	0.600	0.100	0.025	0.025	0.050	14
-015	0.805	0.805	0.135	0.125	0.010	0.040	0.010W x 0.015TH	0.030	0.500	0.050	0.600	0.050	0.025	0.025	0.040	26
-016	0.805	0.805	0.135	0.125	0.010	0.040	0.010W x 0.015TH	0.030	0.500	0.050	0.600	0.100	0.025	0.025	0.040	14
-017	0.820	0.500	0.130	0.115	0.015	0.040	0.010W x 0.015TH	0.030	0.500	0.050	0.600	0.050	0.025	0.025	0.040	26
-018	1.000	0.500	0.150	0.135	0.015	0.040	0.010W x 0.015TH	0.030	0.500	0.060	0.750	0.050	0.025	0.025	0.040	32
-019	1.000	0.750	0.150	0.135	0.015	0.040	0.010W x 0.015TH	0.030	0.500	0.057	0.800	0.050	0.025	0.025	0.040	34
-020	1.000	0.750	0.150	0.135	0.015	0.040	0.010W x 0.015TH	0.030	0.500	0.047	0.900	0.100	0.025	0.025	0.040	20



ATGTPFP - Two Piece Construction Flatpack

	A	B	C	D	E	F	G	H	I	J	K	L	M Max.	N Max.	O	Pin Total
-021	1.000	1.000	0.150	0.135	0.015	0.040	0.010W x 0.015TH	0.030	0.500	0.050	0.750	0.050	0.025	0.025	0.040	32
-022	1.000	1.000	0.150	0.135	0.015	0.040	0.010W x 0.015TH	0.030	0.500	0.050	0.800	0.050	0.025	0.025	0.040	34
-023	1.000	0.795	0.140	0.125	0.015	0.040	0.010W x 0.015TH	0.030	0.500	0.045	0.800	0.050	0.025	0.025	0.040	34
-024	1.000	1.000	0.150	0.135	0.015	0.040	0.010W x 0.015TH	0.030	0.500	0.050	0.800	0.100	0.025	0.025	0.040	18
-025	1.130	0.660	0.140	0.125	0.015	0.040	0.010W x .015TH	0.030	0.500	0.055	0.900	0.050	0.025	0.025	0.040	38
-026	1.130	0.660	0.140	0.125	0.015	0.040	0.010W x .015TH	0.030	0.500	0.045	0.800	0.100	0.025	0.025	0.040	18
-027	1.130	0.945	0.150	0.135	0.015	0.040	0.010W x 0.015TH	0.030	0.500	0.037	0.900	0.100	0.025	0.025	0.040	20
-028	1.180	1.180	0.150	0.135	0.015	0.040	0.010W x 0.015TH	0.030	0.500	0.050	0.800	0.100	0.025	0.025	0.040	42
-029	1.250	1.250	0.150	0.135	0.015	0.040	0.010W x 0.015TH	0.030	0.500	0.050	0.950	0.050	0.025	0.025	0.040	40
-030	2.000	1.000	0.150	0.130	0.020	0.040	0.010W x 0.015TH	0.030	0.500	0.050	1.750	0.050	0.025	0.025	0.040	72



Advanced Technology Group, Inc.
Excellence in Customer Service

101 Roundhill Drive
Rockaway, NJ 07866

Tel: (973) 627-6955
Fax: (973) 627-5980

www.advtechgr.com
info@advtechgr.com